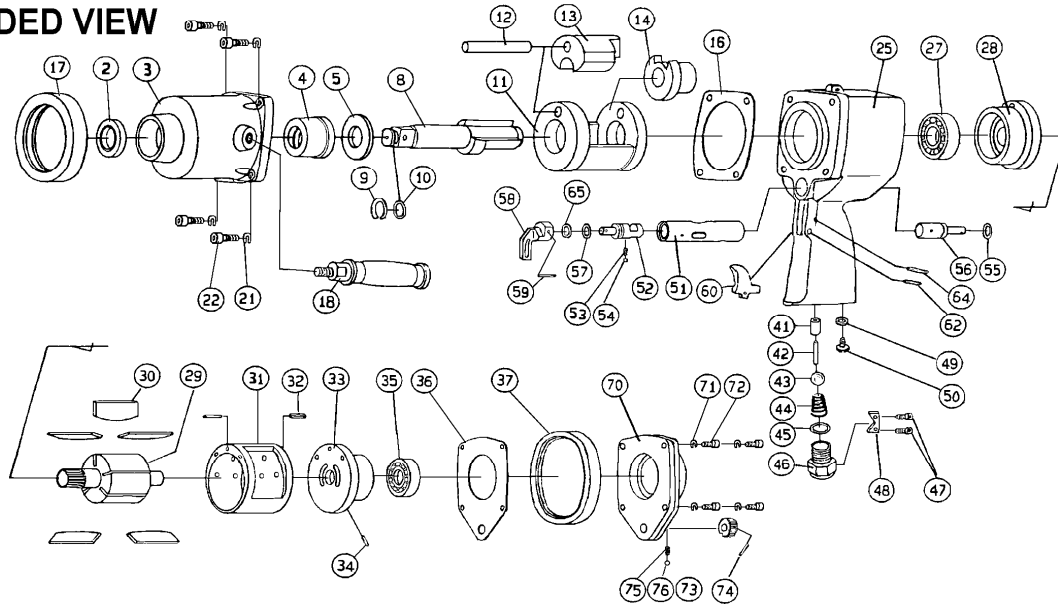




TSW-625P

Pneumatic Impact Wrench

EXPLODED VIEW



Ref. No	Description	Qty	Part Code	Ref. No	Description	Qty	Part Code
2	Oil Seal	1	625-002	33	Rear End Plate	1	625-033
3A	Hammer Case Assembly (No. 2~No. 4)		625-003A	34	Spring Pin	1	625-034
3	Hammer Case	1	625-003	35	Ball Bearing	1	625-035
4	Hammer Case Bushing	1	625-004	36	Motor Case Packing	1	625-036
5	Thrust Washer	1	625-005	37	Rear Protect Rubber	1	625-037
8A	Anvil Assembly (No. 8~No. 10)		625-008A	41	Throttle Bushing	1	625-041
8	Anvil	1	625-008	42	Rear Protect Rubber	1	625-042
8A	Anvil Assembly (No. 8~No. 10)		625-008AM	43	Throttle Valve	1	625-043
8	3" Anvil	1	625-008M	44	Throttle Spring	1	625-044
8A	Anvil Assembly (No. 8~No. 10)		625-008AL	45	O-Ring	1	625-045
8	6" Anvil	1	625-008L	46	Inlet Bushing	1	625-046
9	Retainer Ring	1	625-009	47	Hex. Cap Bolt	2	625-047
10	O-Ring	1	625-010	48	Stopper	1	625-048
11	Hammer Frame	1	625-011	49	O-Ring	1	625-049
12	Hammer Pin	1	625-012	50	Oil Plug Screw	1	625-050
13	Hammer	1	625-013	51	Valve Bushing	1	625-051
14	Driver	1	625-014	52	Reverse Valve	1	625-052
16	Hammer Case Packing	1	625-016	53	Spring	1	625-053
17	Front Protect Rubber	1	625-017	54	Steel Ball	1	625-054
18	Grip Handle	1	625-018	55	O-Ring	1	625-055
21	Spring Washer	4	625-021	56	Adjust Valve	1	625-056
22	Hex. Cap Bolt	4	625-022	57	O-Ring	1	625-057
25CP	Motor Case CP (No. 25~No. 76)		625-025CP	58	Reverse Lever	1	625-058
25A	Motor Case Assembly (No. 25, 41, 51)		625-025A	59	Spring Pin	1	625-059
25	Motor Case	1	625-025	60	Throttle Lever	1	625-060
27	Ball Bearing	1	625-027	62	Spring Pin	1	625-062
28	Front End Plate	1	625-028	64	Spring Pin	1	625-064
29	Rotor	1	625-029	65	Stop Ring	1	625-065
30	Vane	5	625-030	70	Case Cover	1	625-070
31A	Cylinder Assembly (No. 31, No. 32)		625-031A	71	Spring Washer	4	625-071
31	Cylinder	1	625-031	72	Hex. Cap Bolt	4	625-072
32	Spring Pin	2	625-032	73	Adjust Dial	1	625-073
33A	Rear End Plate Assembly (No. 33, No. 34)		625-033A	74	Spring Pin	1	625-074
				75	Spring	1	625-075
				76	Steel Ball	1	625-076