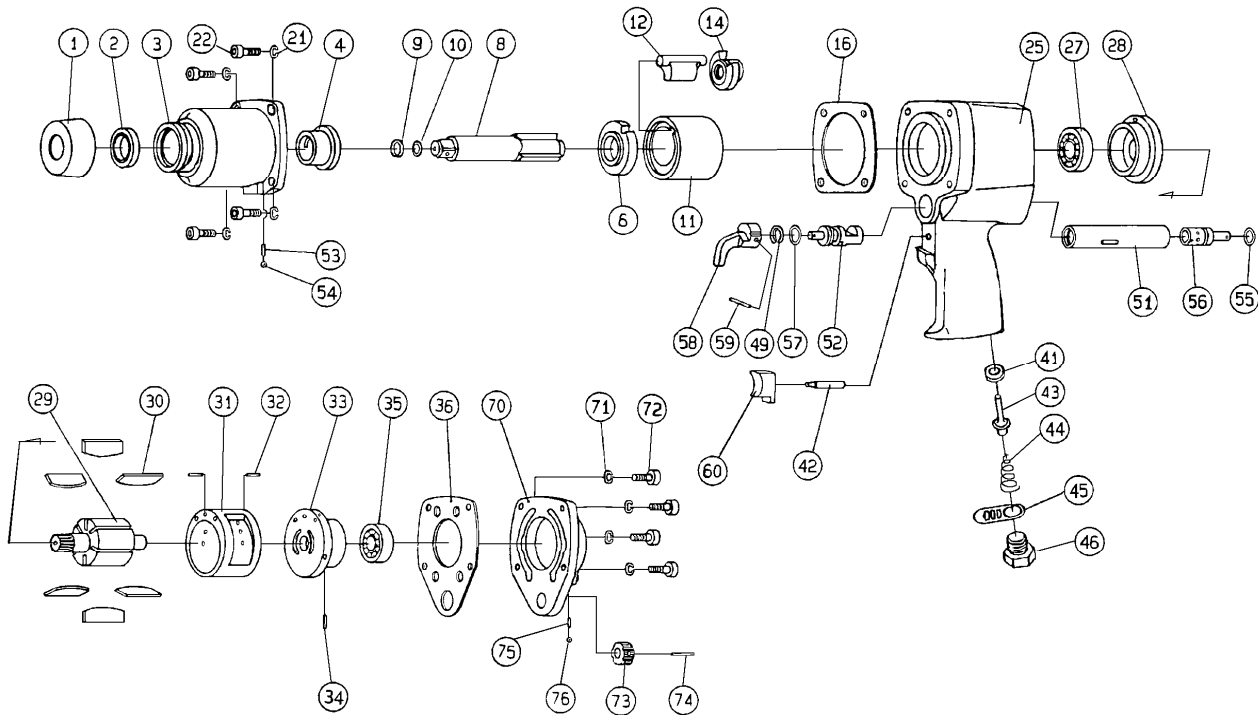




# TSW-415P

# Pneumatic Impact Wrench

## EXPLODED VIEW



Ref. No	Description	Qty	Part Code	Ref. No	Description	Qty	Part Code
1	Cover Seal	1	415-001	33A	Rear End Plate Assembly (No.33, No.34)		415-033A
2	Oil Seal	1	415-002	33	Rear End Plate	1	415-033
3A	HammerCase Assembly (No.1~ 4,5,3,54)		415-003A	34	Spring Pin	1	415-034
3	Hammer Case	1	415-003	35	Ball Bearing	1	415-035
4	Hammer Case Bushing	1	415-004	36	Motor Case Packing	1	415-036
6	Side Plate	1	415-006	41	Valve Seat (Throttle Bushing)		415-041
8A	Anvil Assembly (No.8~No.10)		415-008A	42	Motor Case Packing	1	415-042
8	Anvil	1	415-008	43	Valve Stem (Throttle Valve)	1	415-043
8A	2" Anvil Assembly (No.8~No.10)		415-008AL	44	Throttle Spring	1	415-044
8	2" Anvil	1	415-008L	45	Exhaust Cover	1	415-045
9	Retainer Ring	1	415-009	46	Inlet Bushing	1	415-046
10	O-Ring	1	415-010	49	Stop Ring	1	415-049
11	Hammer Frame	1	415-011	51	Valve Bushing	1	415-051
12	Pin Hammer	1	415-012	52	Reverse Valve	1	415-052
14	Driver	1	415-014	53	Spring	1	415-053
16	Hammer Case Packing	1	415-016	54	Steel Ball	1	415-054
21	Spring Washer	4	415-021	55	O-Ring	1	415-055
22	Hex.Cap Bolt	4	415-022	56	Adjust Valve	1	415-056
25CP	Motor Case CP (No.25~52,55~76)		415-025CP	57	O-Ring	1	415-057
25A	Motor Case Assembly(No.25,51)		415-025A	58	Reverse Lever	1	415-058
25	Motor Case	1	415-025	59	Spring Pin	1	415-059
27	Ball Bearing	1	415-027	60	Throttle Lever	1	415-060
28	Front End Plate	1	415-028	70	Case Cover	1	415-070
29	Rotor	1	415-029	71	Spring Washer	4	415-071
30	Vane	6	415-030	72	Hex.Cap Bolt	4	415-072
31A	Cylinder Assembly (No.31, No.32)		415-031A	73	Adjust Dial	1	415-073
31	Cylinder	1	415-031	74	Spring Pin	1	415-074
32	Spring Pin	2	415-032	75	Spring	1	415-075
				76	Steel Ball	1	415-076

◆Parts may be changed without notice.