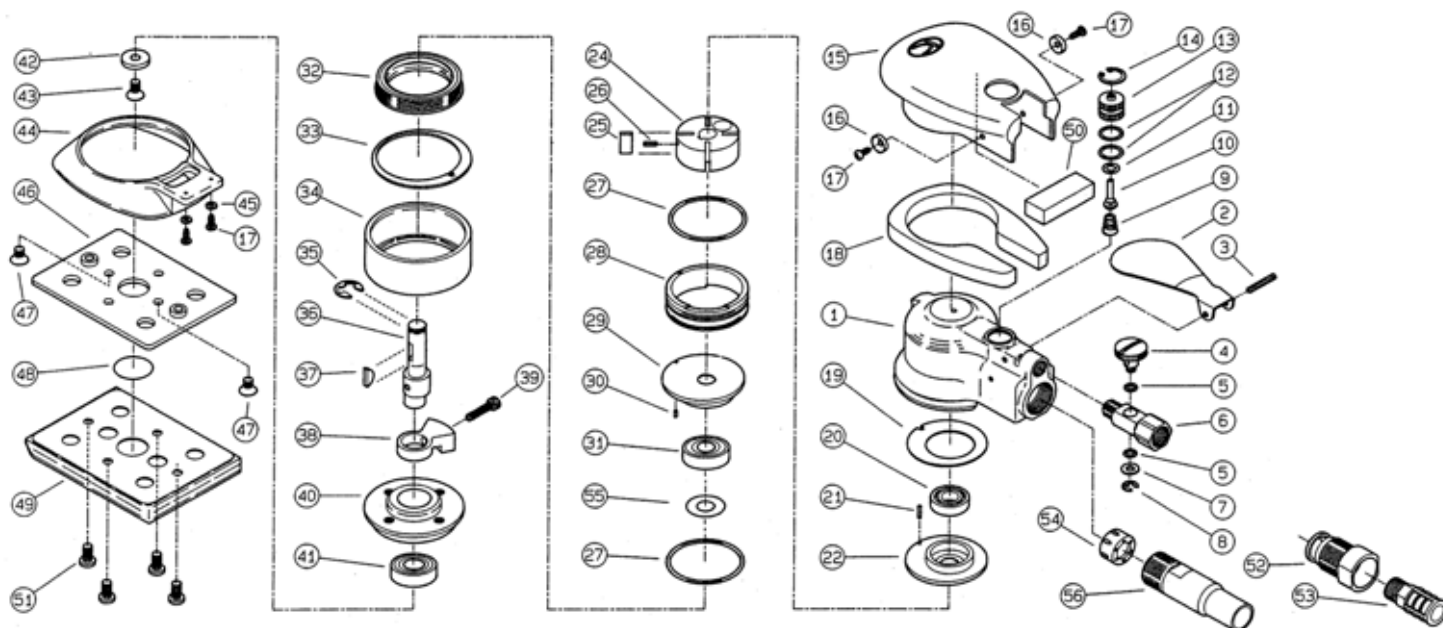


SAM-41·41S &41GP



REF.NO.	PART NO.	PART NAME	Q'TY	REF.NO.	PART NO.	PART NAME	Q'TY
1	2341181	MOTOR CASE C.P.	1	38	2341128	COUNTER WEIGHT	1
2	2341112	THROTTLE LEVER	1	39	Z0664X20	BOLT	1
3	Z0563X20	SPRING PIN	1	40	2341133	BEARING PLATE	1
4	2441287	REGULATING VALVE C.P.	1	41	Z0016001D	BALL BEARING	1
5	Z041S6	O-RING	2	42	2341176	WASHER	1
6	2341119	REGULATING BUSH	1	43	Z0675X10	SCREW	1
7	Z10115X10X08	WASHER	1	44	2341104	DUST COVER	1
8	Z0334	RETAINER RING	1	45	Z10113X7X05	WASHER	2
9	2341138	THROTTLE SPRING	1	46	2341186	PAD SHOE (A)C.P.	1
10	2341113	THROTTLE VALVE PIN	1	47	Z0825X8	SCREW	2
11	Z040P3	O-RING	1	48	24632401	SEAL	1
12	Z041S112	O-RING	2	49	2341151H	STARCH PAD	1
13	2341110	THROTTLE VALVE SEAT	1	49	2341151MH	VELCRO PAD	1
14	Z03114	RETAINER RING	1	50	23411013	CREVICE TAPE	1
15	23411011	RUBBER PROTECTOR	1	51	Z0885X8	SCREW	4
16	Z0973	WASHER	2	55	22551305	WASHER	1
17	Z0803X8U	TAPPING SCREW	4		2341182	BEARING PLATE C.P.	1
18	23411012	INNER PROTECTOR	1	×	2441287	REGULATOR C.P.	1
19	2341106	MOTOR GASKET	1				
20	Z0016900	BALL BEARING	1				
21	Z05615X8	SPRING PIN	1	Parts For SAM-41 (Non-Suction Model)			
22	2341124A	REAR END PLATE	1	52	23411401	EXHAUST BUSH	1
24	2341121	ROTOR	1	53	Z1420302	SILENCER	1
25	2341122	ROTOR BLADE	4				
26	23411381	B-SPRING	4	Parts For SAM-41S (Suction Model)			
27	Z041S40	O-RING	2	54	24412012	NOZZLE	1
28	2341120	CYLINDER	1	56	2441208	DIFFUSER	1
29	2341123A	FRONT END PLATE	1				
30	Z05615X4	SPRING PIN	1	Parts For SAM-41GP (Glass Polisher Model)			
31	Z0016000Z	BALL BEARING	1	49	2341151HS	WATER REPELLENT PAD	1
32	2341139	HOLDING SCREW	1				
33	23411346	RUBBER HOUSING SEAT	1				
34	23411342	RUBBER HOUSING	1				
35	Z0338	RETAINER RING	1				
36	2341130	CRANK SHAFT	1				
37	Z051313	WOODRUFF KEY	1				



KUKEN CO., LTD.

3-6-15 Nonoue, Hanikino-shi, Osaka 583-0871, Japan
Tel : +81-72-953-3346 Fax : +81-72-953-0605