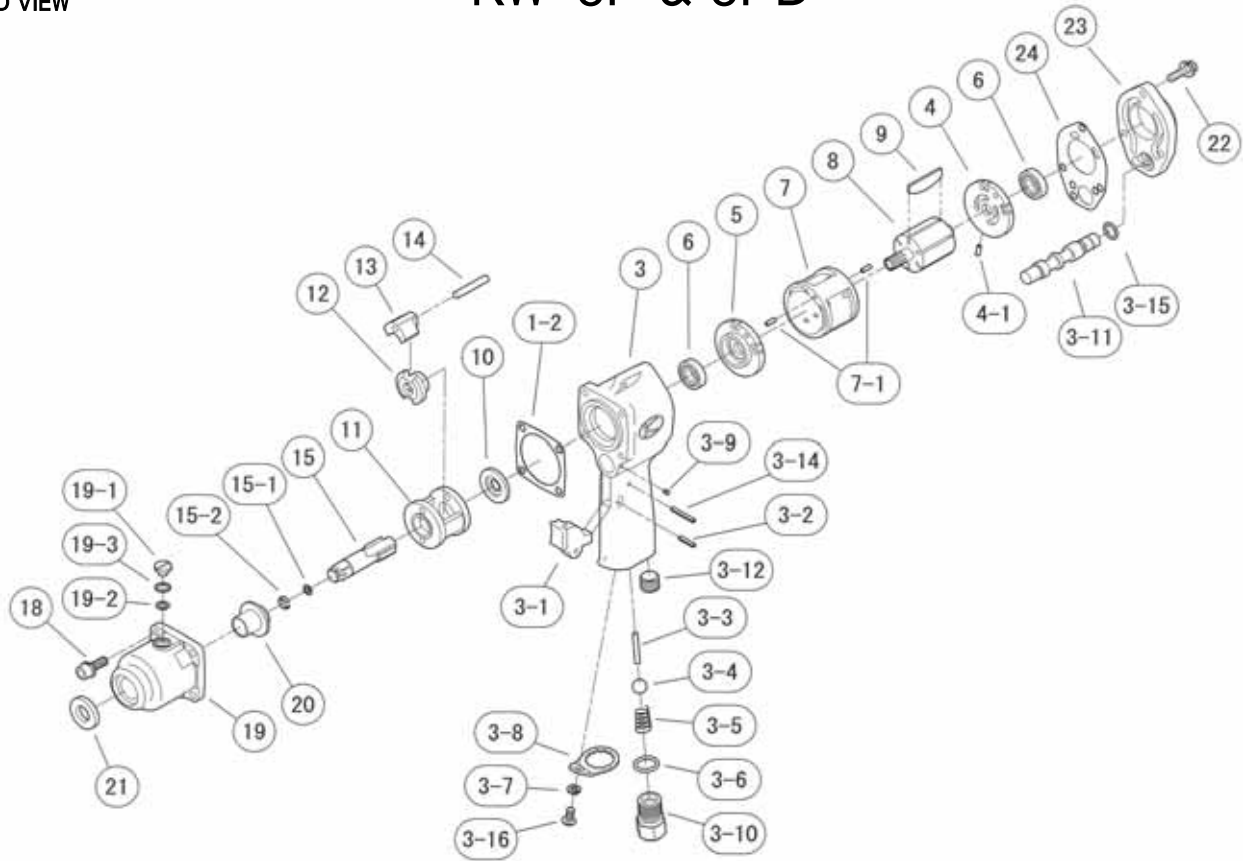


## KW-8P &amp; 8PD



REF.NO.	PART NO.	PART NAME	Q'TY	REF.NO.	PART NO.	PART NAME	Q'TY
1-2	0108107	IMPACT HOUSING GASKET	1	19-2	Z040P6	O-RING	1
3	0206581	MOTOR CASE C.P.	1	19-3	Z0996	TOOTHED LOCK WASHER	1
3-1	0114112	THROTTLE LEVER	1	20	0108133	SPINDLE BUSHING	1
3-2	Z0563X16	PIN	1	21	Z01613254	OIL SEAL	1
3-3	0206513	THROTTLE VALVE PIN	1	22	Z0665X16A	BOLT	3
3-4	Z0117/16D	THROTTLE VALVE	1	23	0206588	BACKHEAD COVER C.P.	1
3-5	0114290	THROTTLE VALVE SPRING	1	24	0108606	MOTOR HOUSING GASKET	1
3-6	Z040P14	O-RING	1	<b>Parts For KW-8PD</b>			
3-7	Z0965X2	WASHER	1	15-A	02062842	D-ANVIL C.P.	1
3-8	0114109	INLET BUSHING SPACER	1	15-3	Z0101/8D	STEEL BALL	1
3-9	Z0763X3	SET SCREW	1	15-4	0206232	RETAINER RING	1
3-10	0114111	INLET BUSHING	1	<b>Parts For KW-8PD QC</b>			
3-11	0206515	REVERSE VALVE	1		0206130C	ANVIL FOR QUICK CHUCK	1
3-12	Z0751/4	OIL SCREW	1		02054301	BALL STOPPER	1
3-14	Z0563X22	PIN	1		02054302	BALL STOPPER SPRING	1
3-15	Z040P10	O-RING	1		02054303	SPRING STOPPER	1
3-16	Z0815X10	SCREW	1		02054304	RETAINER RING	1
4	0108124	REAR END PLATE	1		Z0101/8D	STEEL BALL	1
4-1	Z0563X8	SPRING PIN	1				
5	0108123	FRONT END PLATE	1				
6	Z001EE3	BALL BEARING	2				
7	0206120	CYLINDER	1				
7-1	Z0563X8	SPRING PIN	2				
8	0206121	ROTOR	1				
9	0206122	ROTOR BLADE	6				
10	0108125	SPACER	1				
11	0206126	IMPACT CAGE	1				
12	0206127	CAM	1				
13	0206128	HAMMER	2				
14	Z0575X314	HAMMER PIN	2				
15	02061842	ANVIL C.P. (KW-8P)	1				
15-1	Z040P5	O-RING (KW-8P)	1				
15-2	0206132	RETAINER RING (KW-8P)	1				
18	Z0665X16A	BOLT	4				
19	0206182	IMPACT HOUSING C.P.	1				
19-1	0206191	GREASE SCREW	1				



**KUKEN CO., LTD.**

3-6-15 Nonoue, Habikino-shi, Osaka 583-0871, Japan

Tel : +81-72-953-3346 Fax : +81-72-953-0605

2010/12/06