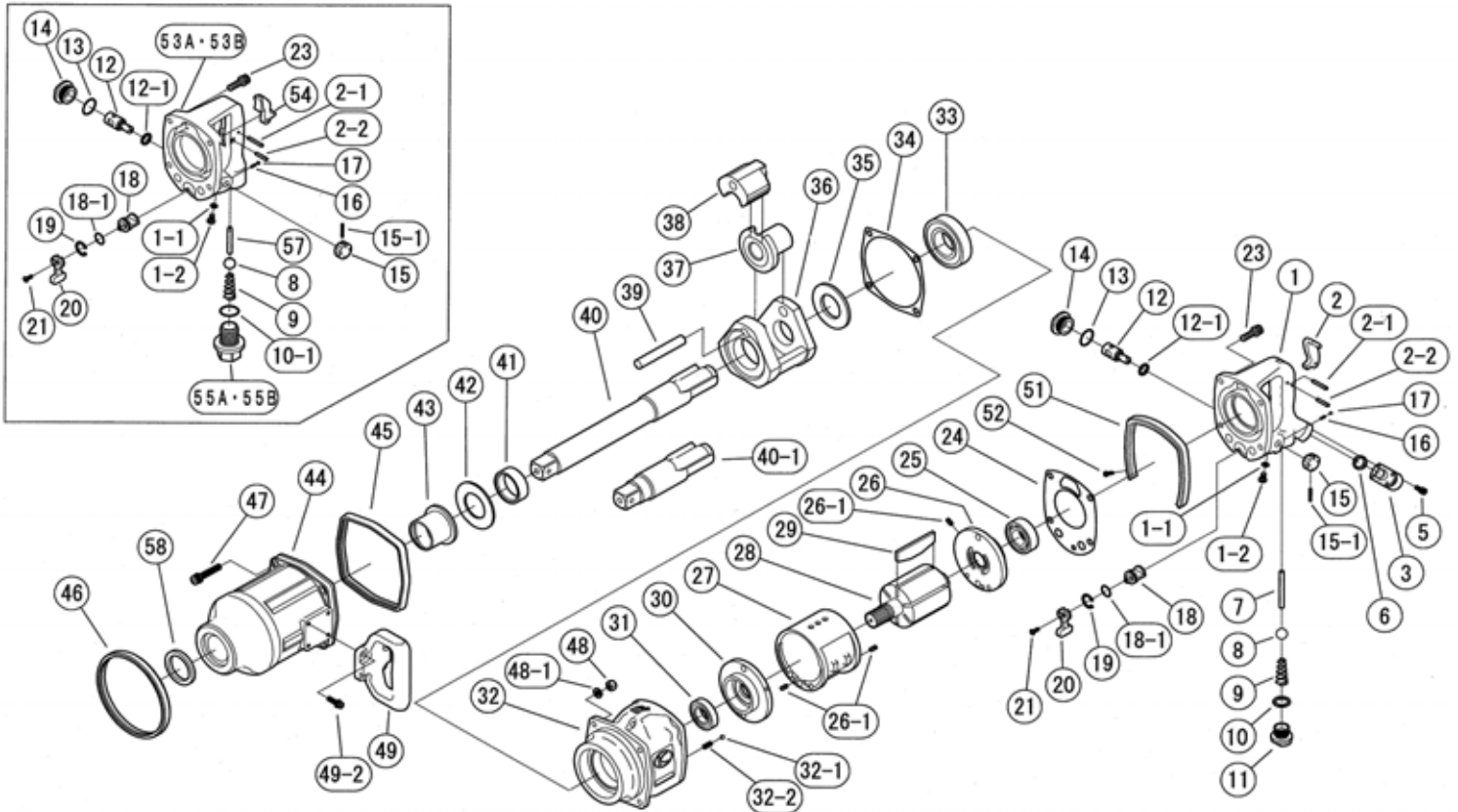


EXPLODED VIEW

KW-500H & 500HG



REF.NO.	PART NO.	PART NAME	Q'TY	REF.NO.	PART NO.	PART NAME	Q'TY
2	0132117D	THROTTLE LEVER	1	32-2	0132991	KNOCK SPRING	1
2-1	Z0614X28	PIN	1	33	Z0016208Z	BALL BEARING	1
2-2	Z0614X22	PIN	1	34	0345207	IMPACT GASKET	1
3	0345290	INLET BUSHING	1	35	0142025	SPACER	1
5	Z0665X12A	BOLT	4	36	0142026B	IMPACT CAGE	1
6	Z040P16	O-RING	1	37	0142027B	CAM	1
7	0142013B	THROTTLE VALVE PIN	1	38	0142028	HAMMER	1
8	Z0115/8D	THROTTLE VALVE BALL	1	39	0142019	HAMMER PIN	1
9	0132190	THROTTLE SPRING	1	40	0142030	SQ.DR.ANVIL	1
10	Z040P20	O-RING	1	40-1	0142030G	SQ.DR.ANVIL (G)	1
11	0132150	PLUG	1	41	0142031	CAGE BUSHING	1
12	0446017	REGULATING VALVE	1	42	0142034	THRUST PLATE	1
12-1	Z040P14	O-RING	1	43	0132132	SPINDLE BUSHING	1
13	Z041S26	O-RING	1	44	0142082B	IMPACT HOUSING CP	1
14	04460391	PLUG	1	45	0142071	REAR RUBBER PROTECTOR	1
15	0442314	REGULATING VALVE KNOB	1	46	0345270	FRONT RUBBER PROTECTOR	1
15-1	Z0563X22	PIN	1	47	Z0668X45A	BOLT	4
16	0114193	KNOCK SPRING	1	48	Z0918	LOCK NUT	4
17	Z0104D	STEEL BALL	1	48-1	Z0968X1	WASHER	4
18	0142015B	REVERSE VALVE	1	49	0132104	D HANDLE	1
18-1	Z041S18	O-RING	1	49-2	Z0666X20A	BOLT	4
19	Z03121	RETAINER RING	1	58	Z01742556	OIL SEAL	1
20	0132915	REVERSE LEVER	1				
21	Z0674X12	SCREW	1				
23	Z0668X25A	BOLT	4				
24	0142006B	MOTOR GASKET	1				
25	Z0016205	REAR BALL BEARING	1	PARTS FOR INSIDE TRIGGER HANDLE			
26	0132124	REAR END PLATE	1	1-2	Z040P6	O-RING	1
26-1	Z0565X10	PIN	3	10-1	Z040P28J	O-RING	1
27	0140509A	CYLINDER	1	53A	0550180bns	HANDLE C.P.(NPT)	1
28	01420211	ROTOR	1	53B	0550180bts	HANDLE C.P.(PT)	1
29	0140512	ROTOR BLADE	6	54	0345417	THROTTLE LEVER	1
30	0132124	FRONT END PLATE	1	55A	0132919nis	INLET BUSHING(NPT)	1
31	Z0016205Z	BALL BEARING	1	55B	0132919is	INLET BUSHING(PT)	1
32	0142081B5	MOTOR CASE C.P.	1	57	0550113bt	THROTTLE VALVE PIN	1
32-1	Z0106D	STEEL BALL	1				



KUKEN CO., LTD.

3-6-15 Nonoue, Habikino-shi, Osaka 583-0871, Japan

Tel : +81-72-953-3346 Fax : +81-72-953-0605

2010/12/06