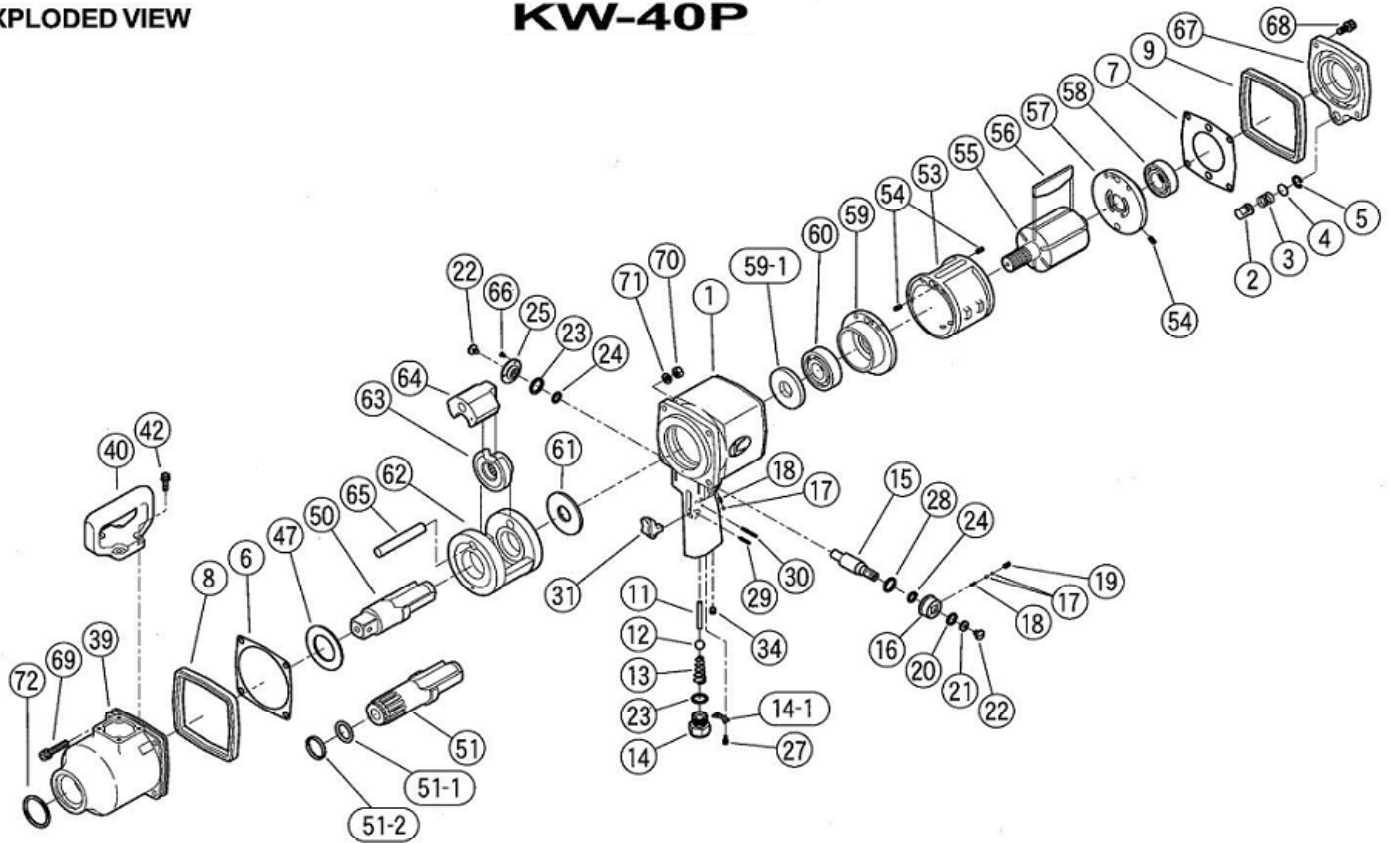


EXPLODED VIEW

KW-40P



REF.NO.	PART NO.	PART NAME	Q'TY	REF.NO.	PART NO.	PART NAME	Q'TY
1	0140181	MOTOR CASE C.P.	1	39	0132382B	IMPACT HOUSING C.P.	1
(1)	0140181N	MOTOR CASE C.P. (NPT)	1	40	0132104	D HANDLE	1
2	0132108	EXHAUST COVER	1	42	Z0666X20A	BOLT	4
3	0132390	EXHAUST SPRING	1	47	0132133	THRUST PLATE	1
4	0132109	EXHAUST SPRING SUPPORT	1	50	0132330	SQ.DR.ANVIL	1
5	Z03117	RETAINER	1	51	01324841	#5 SPLINE DR.ANVIL C.P.	1
6	0132107	IMPACT HOUSING GASKET	1	51-1	Z040P26	O-RING	1
7	0132307	MOTOR GASKET	1	51-2	0132202	RETAINER RING	1
8	0132571	FRONT RUBBER PROTECTOR	1	53	0140509	CYLINDER	1
9	0132371	REAR RUBBER PROTECTOR	1	54	Z0565X10	SPRING PIN	3
11	0132313	THROTTLE VALVE PIN	1	55	01420211	ROTOR	1
12	Z0111/2D	THROTTLE VALVE BALL	1	56	0140512	ROTOR BLADE	6
13	0132190	THROTTLE SPRING	1	57	0132124	REAR END PLATE	1
14	0132311	INLET BUHSING	1	58	Z0016205	REAR BEARING	1
(14)	132311N	INLET BUSHING (NPT)	1	59	0132123	FRONT END PLATE	1
14-1	0132309	INLET BUSHING SPACER	1	59-1	0132135	SHOCK ABSORBER	1
15	0132113F	REVERSING VALVE	1	60	Z0016305	FRONT BEARING	1
16	0132114	REGULATING VALVE KNOB	1	61	0132125	SPACER	1
17	Z0104D	STEEL BALL	3	62	0132126A	IMPACT CAGE	1
18	0114193	KNOCK SPRING	2	63	0132527A	CAM	1
19	Z0835X6	STOP SCREW	1	64	0132128	HAMMER	1
20	Z040P14	O-RING	1	65	0132129	HAMMER PIN	1
21	0132134	VALVE SEAT	1	66	Z0823X6	SCREW	3
22	0132391	VALVE STOP SCREW	2	67	0140188	CASE COVER C.P.	1
23	Z040P18	O-RING	2	68	Z0668X20A	BOLT	4
24	Z040P12	O-RING	2	69	Z0668X38A	BOLT	4
25	0132115	VALVE STOP	1	70	Z0918	LOCK NUT	4
27	Z0664X8A	BOLT	2	71	Z0968X1	WASHER	4
28	Z040P20	O-RING	1	72	Z040P42	O-RING	1
29	Z0563X18	PIN	1				
30	Z0563X28	PIN	1				
31	0132306	THROTTLE LEVER	1				
34	Z0751/4	OIL SCREW	1				



KUKEN CO., LTD.

3-6-15 Nonoue, Habikino-shi, Osaka 583-0871, Japan

Tel : +81-72-953-3346 Fax : +81-72-953-0605

2010/12/06