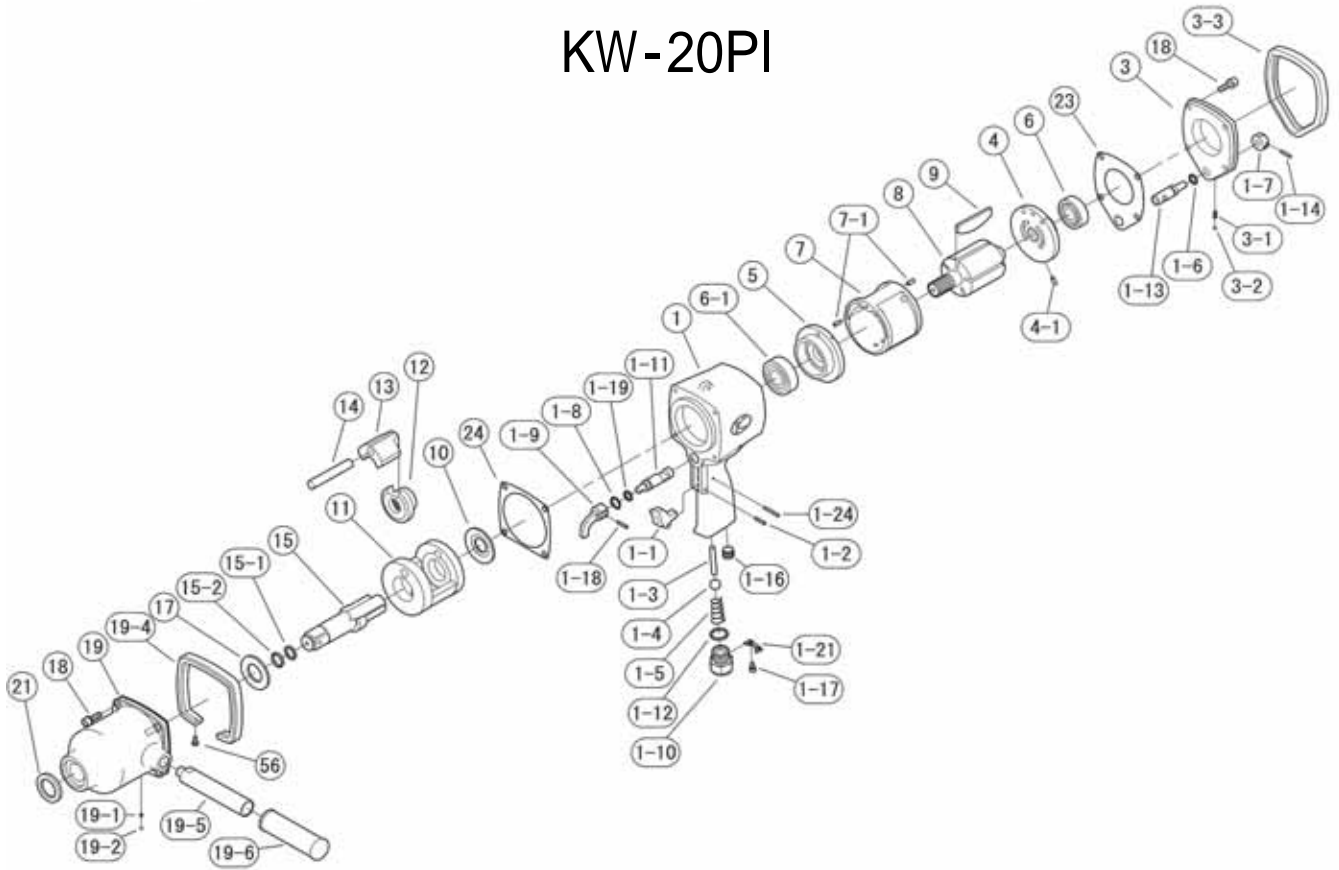


KW-20PI



REF.NO.	PART NO.	PART NAME	Q'TY	REF.NO.	PART NO.	PART NAME	Q'TY
1	0120681	MOTOR CASE C.P.	1	6	Z0016203	REAR BEARING	1
(1)	0120681N	MOTOR CASE C.P. (NPT)	1	6-1	Z0016204Z	FRONT BEARING	1
1-1	0132306	THROTTLE LEVER	1	7	0120304	CYLINDER	1
1-2	Z0563X16	PIN	1	7-1	Z0564X10	SPRING PIN	2
1-3	0120613	THROTTLE VALVE PIN	1	8	0120605A	ROTOR	1
1-4	Z0111/2D	THROTTLE VALVE BALL	1	9	0538022	ROTOR BLADE	5
1-5	0132190	THROTTLE SPRING	1	10	0120609	SPACER	1
1-6	Z040P10	O-RING	1	11	0120610K	IMPACT CAGE	1
1-7	0120210	REGULATOR KNOB	1	12	0120627	CAM	1
1-8	Z03015	RETAINER RING	1	13	0120628A	HAMMER	1
1-9	0114116	REVERSE LEVER	1	14	0120629	HAMMER PIN	1
1-10	0132311	INLET BUSHING	1	15	01206843	ANVIL C.P.	1
(1-10)	0132311N	INLET BUSHING (NPT)	1	(15)	01206844	2" ANVIL C.P.	1
1-11	0120415	REVERSE VALVE	1	(15)	01206845	6" ANVIL C.P.	1
1-12	Z040P18	O-RING	1	15-1	Z040P14	O-RING	1
1-13	0120417	REGULATOR VALVE	1	15-2	0120128	RETAINER RING	1
1-14	Z0563X16	PIN	1	17	0120126	THRUST PLATE	1
1-16	Z0751/4	OIL SCREW	1	18	Z0666X20A	BOLT	8
1-17	Z0664X8A	BOLT	2	19	0120682	IMPACT HOUSING C.P.	1
1-18	Z0563X16	PIN	1	19-1	0114194	KNOCK SPRING	1
1-19	Z040P10	O-RING	1	19-2	Z0104D	STEEL BALL	1
1-21	0132309	INLET BUSHING SPACER	1	19-4	0120670	FRONT RUBBER PROTECTOR	1
1-24	Z0563X24	SPRING PIN	1	19-5	0120292	DEAD HANDLE	1
3	0120688	BACKHEAD COVER C.P.	1	19-6	Z1075627	HANDLE COVER	1
3-1	0114192	KNOCK SPRING	1	21	Z01625385	OIL SEAL	1
3-2	Z0104D	STEEL BALL	1	23	0120416	MOTOR HOUSING GASKET	1
3-3	0120671	REAR RUBBER PROTECTOR	1	24	0120407	IMPACT HOUSING GASKET	1
4	0120302	REAR END PLATE	1	56	Z0804X12	TAPPING SCREW	2
4-1	Z0564X10	SPRING PIN	1				
5	0120303	FRONT END PLATE	1				



KUKEN CO., LTD.

3-6-15 Nonoue, Habikino-shi, Osaka 583-0871, Japan

Tel : +81-72-953-3346 Fax : +81-72-953-0605

2010/12/06