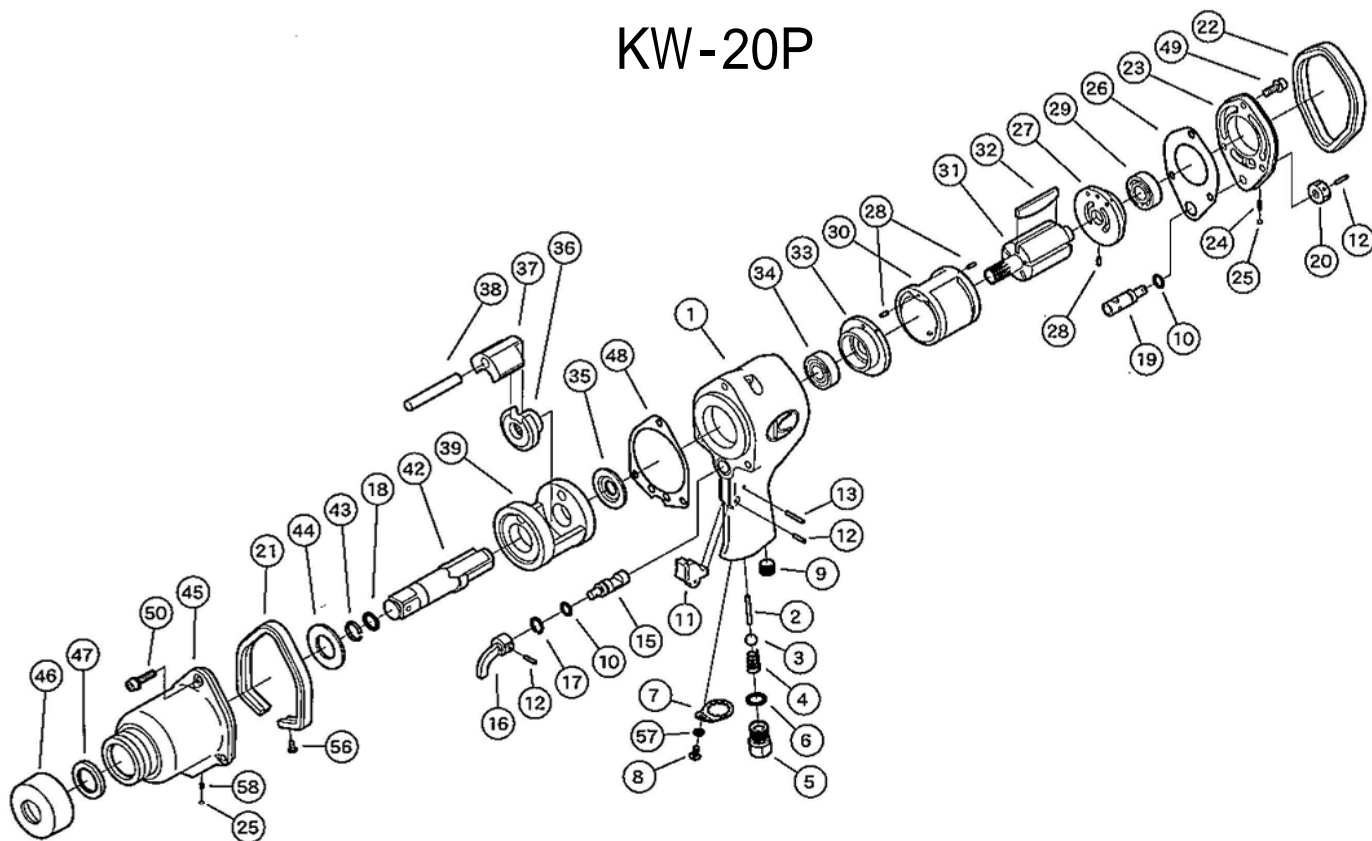


# KW-20P



REF.NO.	PART NO.	PART NAME	Q'TY	REF.NO.	PART NO.	PART NAME	Q'TY
1	0120281	MOTOR CASE C.P.	1	31	0120216	ROTOR	1
(1)	0120281N	MOTOR CASE C.P. ( NPT )	1	32	0120117	ROTOR BLADE	5
2	0120213	THROTTLE VALVE PIN	1	33	0120113A	END PLATE	1
3	Z0117/16D	THROTTLE VALVE	1	34	Z0016202Z	BALL BEARING	1
4	0114190	THROTTLE VALVE SPRING	1	35	0120119	SPACER	1
5	0114111	INLET BUSHING	1	36	0120121A	CAM	1
(5)	0114111N	INLET BUSHING ( NPT )	1	37	0120122A	HAMMER	1
6	Z040P14	O-RING	1	38	0120123	HAMMER PIN	1
7	0114109	INLET BUSHING SPACER	1	39	0120120	IMPACT CAGE	1
8	Z0815X10	SCREW	1	42	01202843	SQ.DR.ANVIL C.P.	1
9	Z0751/4	PLUG	1	(42)	01202844	3/4"SQ.DR.ANVIL C.P. 2"LONG	1
10	Z040P10	O-RING	2	(42)	01202845	3/4"SQ.DR.ANVIL C.P. 6"LONG	1
11	0114112	THROTTLE LEVER	1	43	0120128	RETAINER RING	1
12	Z0563X16	PIN	3	44	0120126	THRUST PLATE	1
13	Z0563X22	PIN	1	45	0120282A	IMPACT HOUSING C.P.	1
15	0114115	REVERSING VALVE	1	46	0120107	RUBBER NOSE SEAL	1
16	0114116	REVERSING LEVER	1	47	Z01625385	OIL SEAL	1
17	Z03015	RETAINER RING	1	48	0120104	HOUSING GASKET	1
18	Z040P14	O-RING	1	49	Z0666X18A	BOLT	3
19	0120209A	REGULATING VALVE	1	50	Z0666X25A	BOLT	3
20	0120210	REGULATING VALVE KNOB	1	56	Z0804X12	TAPPING SCREW	2
21	0120270	FRONT RUBBER PROTECTOR	1	57	Z0965X2	WASHER	1
22	0120271	REAR RUBBER PROTECTOR	1	58	0114194	KNOCK SPRING	1
23	0120288	BACKHEAD COVER C.P.	1				
24	0114192	KNOCK SPRING	1				
25	Z0104D	STEEL BALL	2				
26	0120205	MOTOR HOUSING GASKET	1				
27	0120113A	END PLATE	1				
28	Z0563X8	ROLL PIN	3				
29	Z0016202	REAR BEARING	1				
30	0120115	CYLINDER	1				



**KUKEN CO., LTD.**

3-6-15 Nonoue, Habikino-shi, Osaka 583-0871, Japan  
Tel : +81-72-953-3346 Fax : +81-72-953-0605