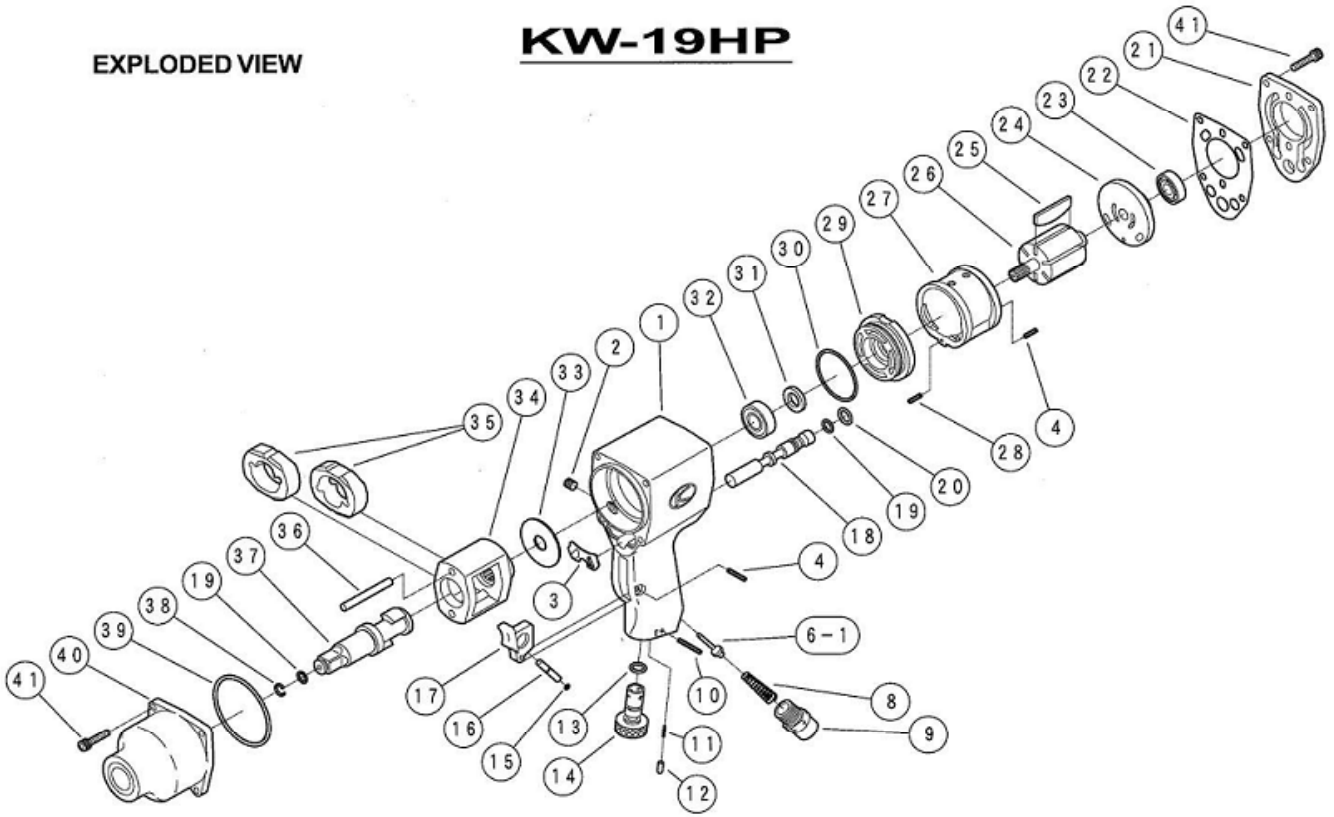


EXPLODED VIEW

KW-19HP



REF.NO.	PART NO.	PART NAME	Q'TY	REF.NO.	PART NO.	PART NAME	Q'TY
1	0119M81	MOTOR CASE C.P.	1	33	0119M31	SPACER	1
2	0119M013	OIL PLUG	1	34	0119M26	HAMMER CAGE	1
3	0119M012	EXHAUST COVER	1	35	0119M28	HAMMER	2
4	Z0563X16	SPRING PIN	2	36	0119M29	HAMMER PIN	2
6-1	0119M13A	THROTTLE VALVE	1	37	0119M843	ANVIL C.P.	1
8	0119M90	THROTTLE SPRING	1	(37)	0119M844	ANVIL C.P. (PINHOLE ANVIL)	1
9	0119M11	INLET BUSHING	1	(37)	0119M845	ANVIL C.P. (2" ANVIL)	1
10	Z0563X24	SPRING PIN	1	38	0119M252	RETAINER RING	1
11	0119M162	SPRING	1	39	0119M171	O-RING	1
12	0119M163	KNOCK PIN	1	40	0119M82	CLUTCH CASE C.P.	1
13	Z040P9	O-RING	1	41	0119M033	BOLT	8
14	0119M17	REGULATOR VALVE	1				
15	0119M173	O-RING	1				
16	0119M132	THROTTLE VALVE PIN B	1				
17	0119M12	THROTTLE LEVER	1				
18	0119M15	REVERSE VALVE	1				
19	Z040P7	O-RING	2				
20	0119M175	O-RING	1				
21	0119M88	CASE COVER C.P	1				
22	0119M06	REAR GASKET	1				
23	Z0016000Z	BALL BEARING	1				
24	0119M24	REAR END PLATE	1				
25	0119M22	ROTOR BLADE	6				
26	0119M21	ROTOR	1				
27	0119M20	CYLINDER	1				
28	Z0563X12	SPRING PIN	1				
29	0119M23	FRONT END PLATE	1				
30	0119M176	O-RING	1				
31	0119M031	OIL SEAL	1				
32	Z001EE4ZZ	BALL BEARING	1				



KUKEN CO., LTD.

3-6-15 Nonoue, Habikino-shi, Osaka 583-0871, Japan

Tel : +81-72-953-3346 Fax : +81-72-953-0605

2010/12/06