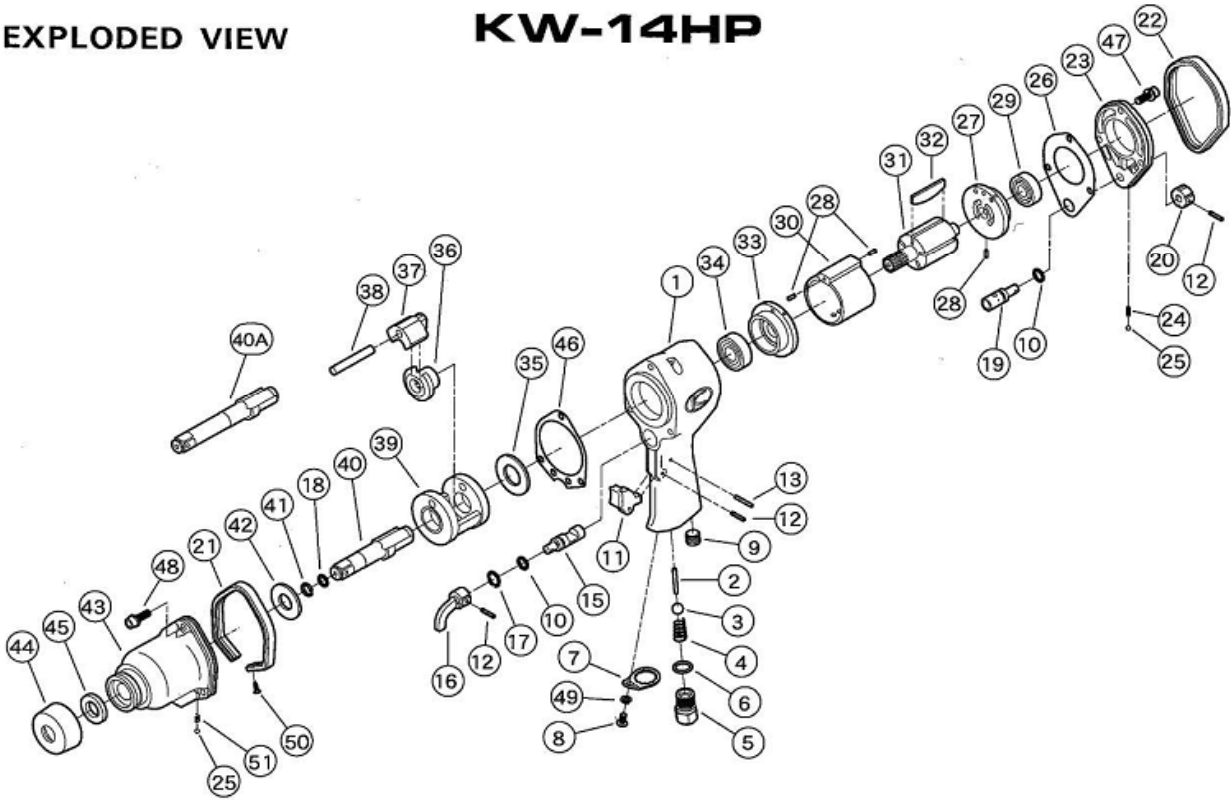


EXPLODED VIEW

**KW-14HP**



REF.NO.	PART NO.	PART NAME	Q'TY	REF.NO.	PART NO.	PART NAME	Q'TY
1	0114181	MOTOR CASE C.P.	1	27	0114124A	REAR END PLATE	1
(1)	0114181N	MOTOR CASE C.P. ( NPT )	1	28	Z0563X8	SPRING PIN	3
2	0114113	THROTTLE VALVE PIN	1	29	Z0016201	BALL BEARING	1
3	Z0117/16D	THROTTLE VALVE	1	30	0114120	CYLINDER	1
4	0114190	THROTTLE VALVE SPRING	1	31	0114121A	ROTOR	1
5	0114111	INLET BUSHING	1	32	0520022A	ROTOR BLADE	5
(5)	0114111N	INLET BUSHING ( NPT )	1	33	0114123	FRONT END PLATE	1
6	Z040P14	O-RING	1	34	Z0016202Z	BALL BEARING	1
7	0114109	INLET BUSHING SPACER	1	35	0114125	SPACER	1
8	Z0815X10	SCREW	1	36	0114127	CAM	1
9	Z0751/4	OIL SCREW	1	37	0114128A	HAMMER	1
10	Z040P10	O-RING	2	38	0114129	HAMMER PIN	1
11	0114112	THROTTLE LEVER	1	39	0114126	IMPACT CAGE	1
12	Z0563X16	PIN	3	(40)	01141843	ANVIL C.P.	1
13	Z0563X22	PIN	1	(40)	01141844	2" ANVIL C.P.	1
15	0114115	REVERSE VALVE	1	41	0114134	RETAINER RING	1
16	0114116	REVERSE LEVER	1	42	0114132	THRUST PLATE	1
17	Z03015	RETAINER RING	1	43	0114182	CLUTCH CASE C.P.	1
18	Z040P9	O-RING	1	44	0114135	COVER SEAL	1
19	0114117	REGULATOR VALVE	1	45	Z01617305	OIL SEAL	1
20	0114118	REGULATING VALVE KNOB	1	46	0114107	IMPACT HOUSING GASKET	1
21	0114170	FRONT RUBBER PROTECTOR	1	47	Z0666X18A	BOLT	3
22	0114171	REAR RUBBER PROTECTOR	1	48	Z0666X20A	BOLT	3
23	0114188	BACK HEAD COVER C.P.	1	49	Z0965X2	WASHER	1
24	0114192	KNOCK SPRING	1	50	Z0803X10	TAPPING SCREW	2
25	Z0104D	STEEL BALL	2	51	0114193	KNOCK SPRING	1
26	0114106	MOTOR HOUSING GASKET	1				



**KUKEN CO., LTD.**

3-6-15 Nonoue, Habikino-shi, Osaka 583-0871, Japan

Tel : +81-72-953-3346 Fax : +81-72-953-0605