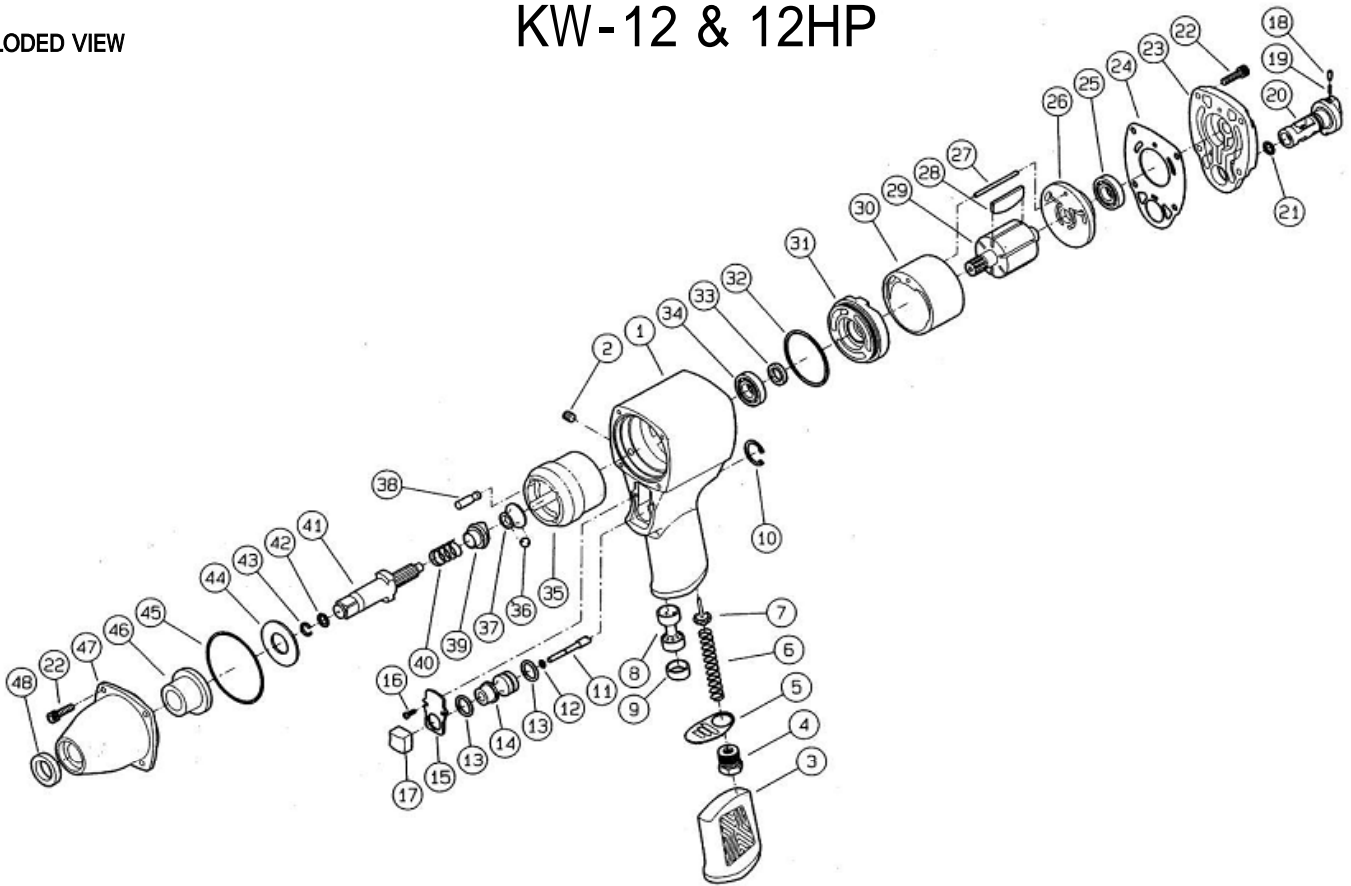


KW-12 & 12HP



REF.NO.	PART NO.	PART NAME	Q'TY	REF.NO.	PART NO.	PART NAME	Q'TY
1	0112M01	MOTOR CASE	1	28	0112M22	ROTOR BLADE	6
2	0114M013	OIL PLUG	1	29	0112M21	ROTOR	1
3	0112M011	GRIP COVER	1	30	0112M20	CYLINDER	1
4	0118M11	INLET BUSHING	1	31	0112M23	FRONT END PLATE	1
(4)	0118M11N	INLET BUSHING (NPT)	1	32	Z041S38	O-RING	1
5	0112M012	EXHAUST COVER	1	33	0112M031	OIL SEAL	1
6	0118M90	THROTTLE VALVE SPRING	1	34	Z0016901	BALL BEARING	1
7	0118M13	THROTTLE VALVE PIN	1	35	0112M26	HAMMER WHEEL	1
8	0112M40	SILENCER	1	36	Z0101/4D	STEEL BALL	1
9	0112M41	RUBBER SUPPORT	1	37	0112M43	CAM SHAFT	1
10	0118M152	RETAINER RING	1	38	0112M29	HAMMER PIN	2
11	0112M15	Throttle Pin	1	39	0112M27	CAM	1
12	0112M170	"O"Ring	1	40	0112M38	SPRING	1
13	Z040P10	O-RING	2	41	0112M844	ANVIL C.P.(KW-12HP)	1
14	0112M10	THROTTLE BUSHING	1	(41)	0112M843	ANVIL C.P.(KW-12)	1
15	0112M121	STOP COVER	1	(41)	0112M844P	ANVIL C.P. Pin anvil (KW-12HP)	1
16	Z08035X10ST	TAPPING SCREW	2	(41)	0112M843P	ANVIL C.P. Pin anvil (KW-12)	1
17	0112M12	THROTTLE LEVER	1	42	0114M251	O-RING (KW-12HP)	1
18	0118M164	STEEL BALL	1	42	0110M301	O-RING (KW-12)	1
18	0118M163	STEEL BALL	1	43	0114M252	RETAINER RING (KW-12HP)	1
19	0118M162	SPRING	1	(43)	0110M34	RETAINER RING (KW-12)	1
20	0118M17	REVERSE REGULATOR	1	44	0112M25	SPACER	1
21	0118M176	O-RING	1	45	Z041S42	O-RING	1
22	0118M033	BOLT	8	46	0110M08	CASE BUSHING	1
23	0112M03	CASE COVER	1	47	0112M821	IMPACT HOUSING C.P.(KW-12HP)	1
24	0112M06	MOTOR GASKET	1	(47)	0112M82	IMPACT HOUSING C.P.(KW-12)	1
25	Z001EE3	BALL BEARING	1	48	0112M46	OIL SEAL(KW-12HP)	1
26	0112M24	REAR END PLATE	1	(48)	0110M022	OIL SEAL(KW-12)	1
27	0114M201	PIN	1				



KUKEN CO., LTD.

3-6-15 Nonoue, Habikino-shi, Osaka 583-0871, Japan

Tel : +81-72-953-3346 Fax : +81-72-953-0605

2010/12/06