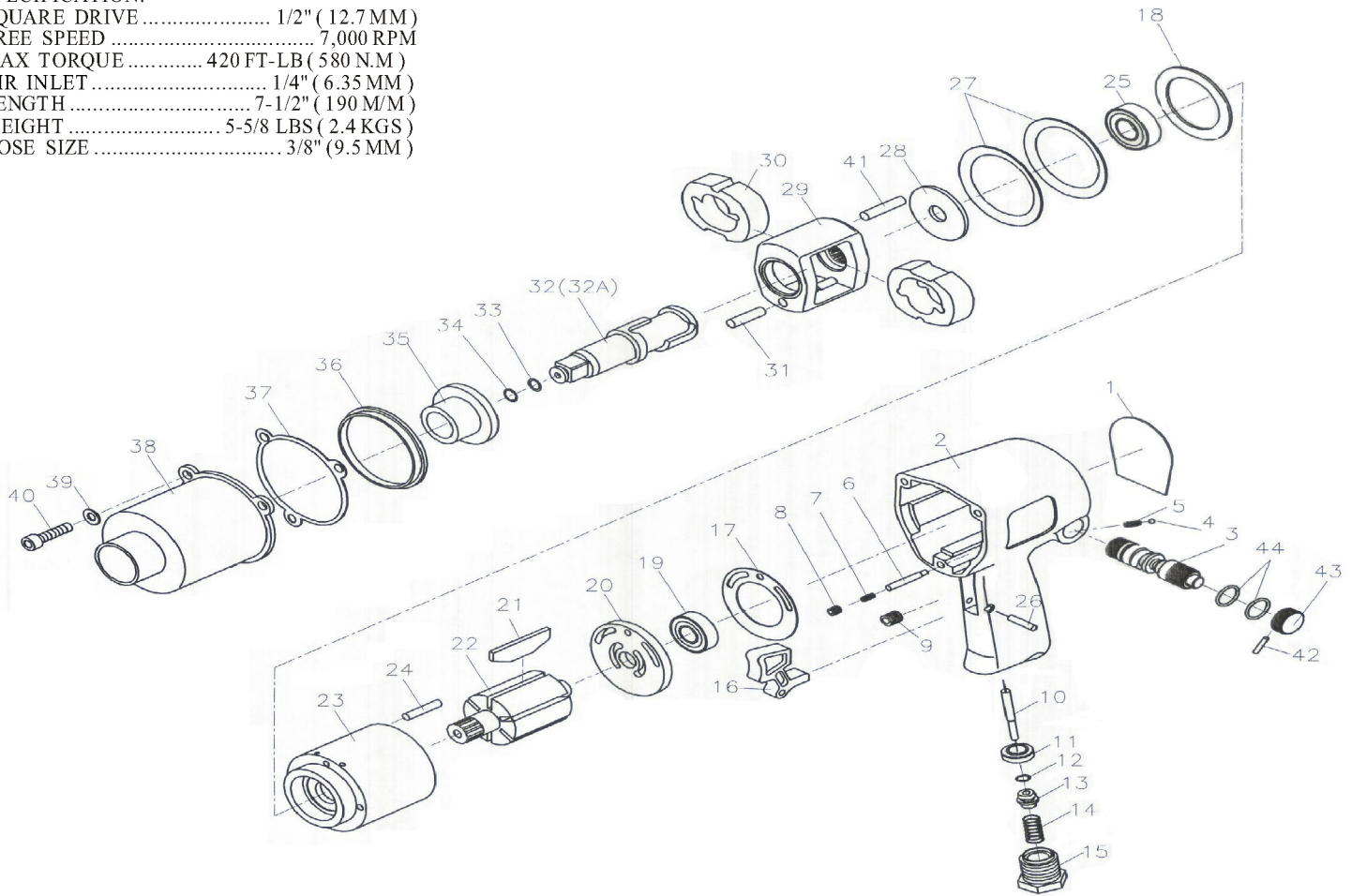


## Professional Duty

## 1/2" Impact Wrench Model No: NW-4231

**SPECIFICATION:**

SQUARE DRIVE ..... 1/2" (12.7 MM)  
 FREE SPEED ..... 7,000 RPM  
 MAX TORQUE ..... 420 FT-LB (580 N.M)  
 AIR INLET ..... 1/4" (6.35 MM)  
 LENGTH ..... 7-1/2" (190 MM)  
 WEIGHT ..... 5-5/8 LBS (2.4 KGS)  
 HOSE SIZE ..... 3/8" (9.5 MM)



**PART LIST :**

| NO | DESCRIPTION        | PART NO.     | Qty | REMARK |
|----|--------------------|--------------|-----|--------|
| 1  | REAR PLATE         | P041         | 1   |        |
| 2  | HOUSING            | 2312B00200   | 1   |        |
| 3  | REVERSE THROTTLE   | 2312A00300   | 1   |        |
| 4  | STELL BALL         | 0420000000   | 1   |        |
| 5  | SPRING             | 9662000000   | 1   |        |
| 6  | PIN                | 2312A00600   | 1   |        |
| 7  | SPRING             | 2312A00700   | 1   |        |
| 8  | SET SCREW          | 8017000000   | 1   |        |
| 9  | SCREW              | 8045000000   | 1   |        |
| 10 | VALVE PIN          | 4110000000   | 1   |        |
| 11 | VALVE THROTTLE     | 4111000000   | 1   |        |
| 12 | O-RING             | P8           | 1   |        |
| 13 | VALVE              | 4113000000   | 1   |        |
| 14 | SPRING             | 4114000000   | 1   |        |
| 15 | INLET              | 411500000PT  | 1   |        |
|    | INLET              | 4115000000   | 1   |        |
| 16 | TRIGGER            | 4117000000   | 1   |        |
| 17 | REAR GASKET        | 4118000000*1 | 1   |        |
| 18 | WASHER             | 2312A01800   | 1   |        |
| 19 | BEARING            | 2312A01900   | 1   |        |
| 20 | REAR BEARING PLATE | 2312A02000   | 1   |        |
| 21 | VANE               | 2312A02100   | 6   |        |
| 22 | ROTOR              | 2312A02200   | 1   |        |
| 23 | CYLINDER           | 2312A02300   | 1   |        |
| 24 | SPRING PIN         | 2312A02400   | 1   |        |
| 25 | BEARING            | 9620000000   | 1   |        |
| 26 | PIN                | 4145000000   | 1   |        |
| 27 | CLAMP WASHER       | 4128000000   | 2   |        |
| 28 | REAR WASHER        | 4129000000   | 1   |        |
| 29 | HAMMER FRAME       | 903400000A   | 1   |        |

| NO | DESCRIPTION       | PART NO.     | Qty | REMARK |
|----|-------------------|--------------|-----|--------|
| 30 | HAMMER            | 4038000000   | 2   |        |
| 31 | HAMMER FRAMER PIN | 2312A03100   | 1   |        |
| 32 | ANVIL             | 9038000000   | 1   |        |
| 33 | O-RING            | P7           | 1   |        |
| 34 | RETAINER          | 4045000000   | 1   |        |
| 35 | BUSHING           | 2312A03500   | 1   |        |
| 36 | HAMMER CASE PILOT | 4139000000   | 1   |        |
| 37 | GASKET            | 4146000000   | 1   |        |
| 38 | HAMMER CASE       | 4141000000*2 | 1   |        |
| 39 | WASHER            | 401300000W   | 1   |        |
| 40 | SCREW             | 4013000000   | 1   |        |
| 41 | HAMMER FRAMER PIN | 2312A04100   | 1   |        |
| 42 | PIN               | 0458000000   | 1   |        |
| 43 | REGULATOR         | 2312A04300   | 1   |        |
| 44 | O-RING            | 2312A04400   | 2   |        |

|    |   |  |       |  |
|----|---|--|-------|--|
| K1 | TUNE UP KIT   |  | 1 SET |  |
| K2 | SCREW AND WASHER KIT                                    |  | 1 SET |  |
| K3 | ANVIL HAMMER KIT  |  | 1 SET |  |
| K4 | VALVE KIT   |  | 1 SET |  |
| K5 | TRIGGER KIT   |  | 1 SET |  |
| K6 | REGULATOR ASSEMBLY KIT                                  |  | 1 SET |  |
| K7 | REGULATOR KNOBS KIT                                     |  | 1 SET |  |
| K1 | 4,6,7,8,10,11,12,13,14,18,22,27,28,29,34,35,38,42,43,44 |  |       |  |
| K2 | 16,29,40,41   |  |       |  |
| K3 | 31,32,33,34,35  |  |       |  |
| K4 | 10,11,12,13,14  |  |       |  |
| K5 | 17,44   |  |       |  |
| K6 | 4,5,6,7,8   |  |       |  |
| K7 | 9,43  |  |       |  |