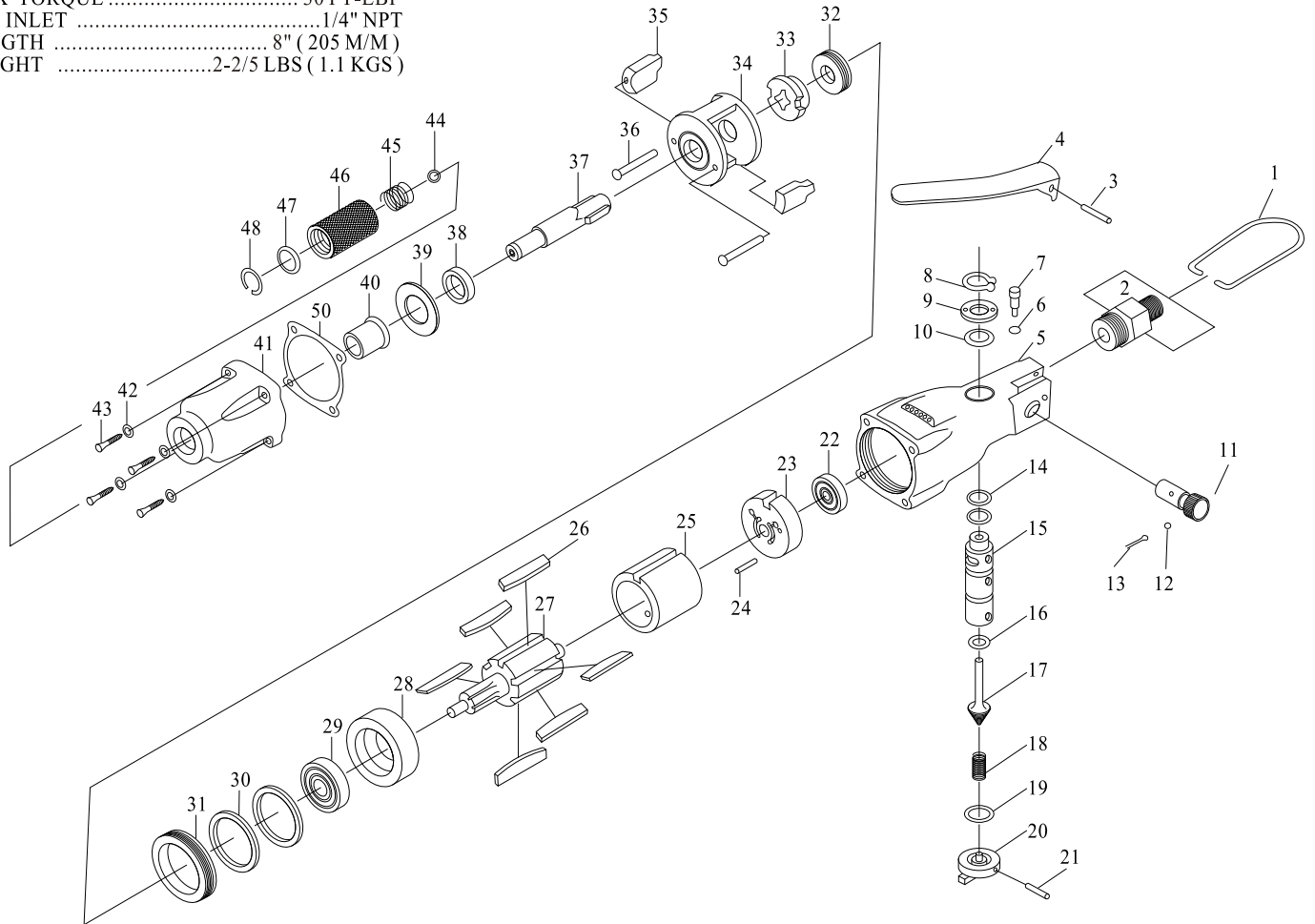


Professional Duty

1/4" Air Screwdriver Model No.: ND-8HQ

SPECIFICATION:

INTERNAL HEX 1/4"
 FREE SPEED 7,000 RPM
 MAX TORQUE 30 FT-LBF
 AIR INLET 1/4" NPT
 LENGTH 8" (205 M/M)
 WEIGHT 2-2/5 LBS (1.1 KGS)



PART LIST:

NO	DESCRIPTION	PART NO	Qty	REMARK
1	HOOK	110100000L	1	
2	INLET BUSHING	1102000000	1	
3	φ 2.5XL22 PIN	0425000000	1	
4	SWITCH LEVER	0604000000	1	
5	HOUSING	060500000P	1	
6	P3 O-RING	P3	1	
7	φ 5/32 SCREW	0607000000	1	
8	S9 "C" PETAINING RING	0426000000	1	
9	WASHER	0609000000	1	
10	P8 O-RING	P8	1	
11	REGULATOR	0611000000	1	
12	1/8" STEEL BALL	0420000000	1	
13	SPRING	0423000000	1	
14	P8 O-RING	P8	2	
15	THROTTLE BUSHING	0615000000	1	
16	P3 O-RING	P3	1	
17	THROTTLE PIN	061700000H	1	
18	SPRING	1119000000	1	
19	P5 O-RING	P5	1	
20	REVERSE VALVE	062000000N	1	
21	φ 2XL20 PIN	0447000000	1	
22	608 BEARING	1123000000	1	
23	REAR PLATE	0623000000	1	
24	φ 2.5XL20 PIN	0624000000	1	
25	CYLINDER	0625000000	1	

NO	DESCRIPTION	PART NO	Qty	REMARK
26	BLADES	0626000000	6	
27	ROTOR	0627000000	1	
28	FRONT PLATE	0628000000	1	
29	609 BEARING	0629000000	1	
30	GASKET	0630000000	2	
31	NUT	0631000000	1	
32	WASHER	0632000000	1	
33	CAM	0633000000*1	1	
34	HAMMER HOUSING	0634000000	1	
35	HAMMER	0635000000	2	
36	φ 5 PIN	0636000000	2	
37	ANVIL(SCREWDRIVER)	063700000HO	1	
38	COLLAR	0638000000	1	
39	WASHER	0639000000	1	
40	SLEEVE	0640000000	1	
41	HOUSING CAP	0641000000	1	
42	5/32" WASHER	0642000000	4	
43	M4XL16 SCREW	0643000000	4	
44	φ 4 STEEL BALL	0424000000	1	
45	SPRING	0645000000	1	
46	SPRING SEAT	0646000000	1	
47	WASHER	0647000000	1	
48	CIRCLLET	0648000000	1	
50	GASKET	0650000000	1	