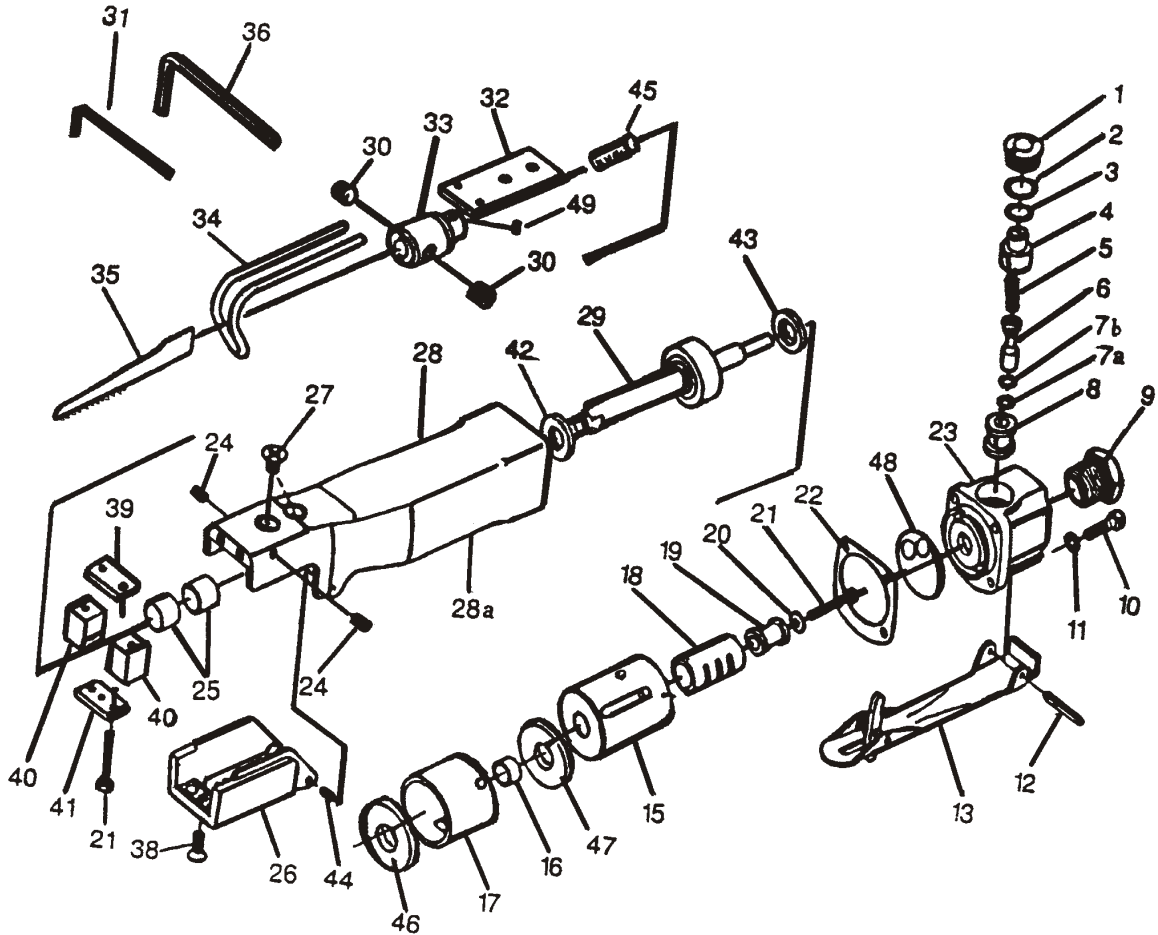


Professional Duty

Air Body Saw Model No: NAS - 16

SPECIFICATION:

FREE SPEED 9,000 RPM
 CUTTING SIZE 1.6 M/M
 AIR INLET 1/4"
 AIR CONSUMPTION 230 L/MIN
 LENGTH 9-1/4" (235 M/M)
 WEIGHT 2.2 LBS (1.0 KGS)



PART LIST :

NO	DESCRIPTION	PART NO.	Qty	REMARK
1	VALVE SCREW	BP03010010	1	
2	O-RING	BP03010020	1	
3	O-RING	BP03010030	1	
4	AIR CONTROLLER	BP03010040	1	
5	VALVE SPRING	BP03010050	1	
6	VALVE STEM	BP03010060	1	
7A	P006 O-RING	BP0301007A	1	
7B	P007 O-RING	BP0301007B	1	
8	VALVE BUSHING	BP03010080	1	
9	INLET BUSHING	BP03010090	1	
10	CAP SCREW(M4*15)	BP03010100	4	
11	WASHER(M4)	BP03010110	4	
12	LEVER PIN(3*23)	BP03010120	1	
13	THROTTLE LEVER	BP03010130	1	
15	VALVE CASE	BP03010150	1	
16	BUSH	BP03010160	1	
17	CYLINDER	BP03010170	1	
18	VALVE STEEVE	BP03010180	1	
19	ACTUATE VALVE	BP03010190	1	
20	WASHER(Ø3*Ø8*Ø0.8t)	BP03010200	1	
21	CAP SCREW(M3*23)	BP03010210	3	
22	GASKET	BP03010220	1	
23	VALVE BLOCK(M4*6)	BP03010230	1	
24	SET SCREW	BP03010240	2	
25	BUSH	BP03010250	2	
26	CHUCK COVER	BP03010260	1	

NO	DESCRIPTION	PART NO.	Qty	REMARK
27	SCREW(M5*8)	BP03010270	2	
28	HOUSING	BP03010280	1	
28A	PLASTIC WRAPP	BP0301028A	1	
29	PISION ASSY	BP03010290	1	
30	SET SCREWS(5/16"*5/16")	BP03010300	2	
31	SERVICE WRENCH(2MM)	BP03010310	1	
32	GUIDE PLATE	BP03010320	1	
33	BIEDE CHUCK	BP03010330	1	
34A	WORK GUIDE (LONG)	BP0301034A	1	
34B	WORK GUIDE (SHORT)	BP0301034B	1	
35A	BLADE (32T)	BP0301035A	1	
35B	BLADE (24T)	BP0301035B	1	
36	SERVICE WRENCH(4MM)	BP03010360	1	
38	SCREW (M4*10)	BP03010380	1	
38A	RETAINING RING E3	BP0301038A	1	
39	UPPER WEAR SHOE	BP03010390	1	
40	BLADE GUIDE	BP03010400	2	
41	BRIDGE	BP03010410	1	
42	FRONT BUMPER	BP03010420	1	
43	REAR BUMPER	BP03010430	1	
44	SPRING PIN(M2.5*5)	BP03010440	2	
45	SPRING	BP03010450	1	
46	PACKING	BP03010460	1	
47	PACKING	BP03010470	1	
48	PACKING	BP03010480	1	
49	SET SEREW(M5*5)	BP03010490	1	