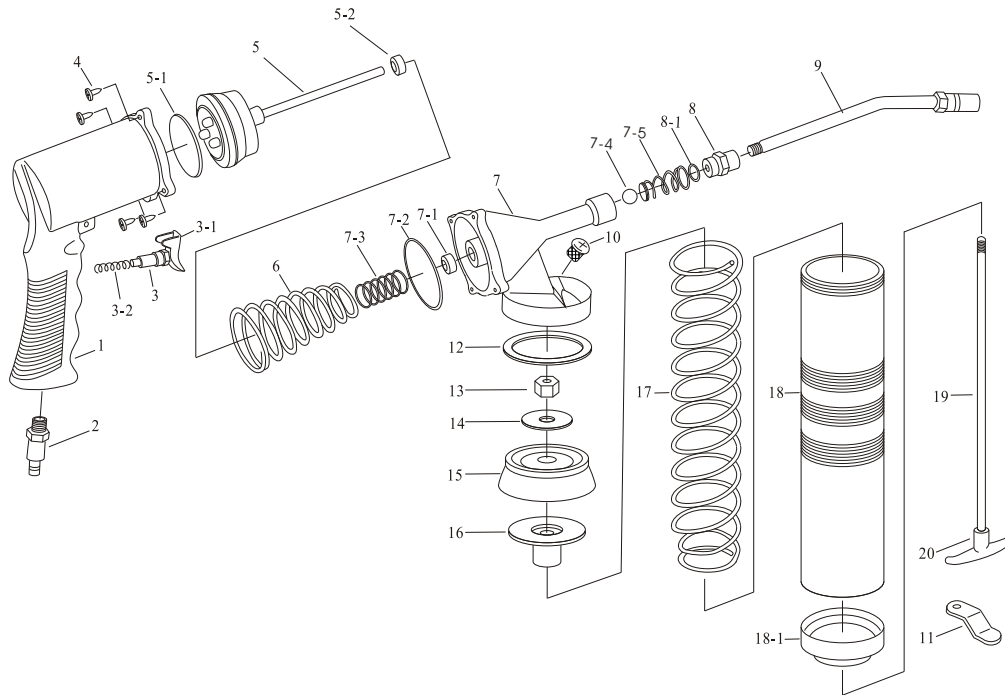


Air Body Saw Model No: NAGP - 402CS



PARTS LIST :

NO	DESCRIPTION	PARTS NO	Qty	REMARK
1	Finger Grip	BP801CS010	1	
2	Air Fitting	BP801CS020	1	
3	Switch	BP801CS030	1	
3-1	Trigger & Pin	BP801CS031	1	
3-2	Switch Spring	BP801CS032	1	
4	Body Screw	BP801CS040	4	
5	Air Piston Unit	BP801CS050	1	
5-1	Piston Ring	BP801CS051	1	
5-2	Absorb Gasket	BP801CS052	1	
6	Short Spring Kit	BP801CS060	1	
7	Housing Cap	BP801CS070	1	
7-1	Piston Hole Gasket	BP801CS071	1	
7-2	Housing Ring	BP801CS072	1	
7-3	Piston Spring	BP801CS073	1	
7-4	Ball Check	BP801CS074	1	
7-5	Ball Spring	BP801CS075	1	

NO	DESCRIPTION	PARTS NO	Qty	REMARK
8	Adapter	BP801CS080	1	
8-1	Adapter Ring	BP801CS081	1	
9	Bend Spout	BP801CS090	1	
10	Round Plug	BP801CS100	1	
11	Catch Plate	BP801CS110	1	
12	Container Gasket	BP801CS120	1	
13	Plunger Nut	BP801CS130	1	
14	Plunger Washer	BP801CS140	1	
15	Plunger	BP801CS150	1	
16	Backlash Gasket	BP801CS160	1	
17	Long Spring Kit	BP801CS170	1	
18	Container Tube	BP801CS180	1	
18-1	Bottom Cap	BP801CS181	1	
19	Plunger Rod	BP801CS190	1	
20	Plunger Handle	BP801CS200	1	

OPERATION INSTRUCTION

801CS.V1/06

1. Add oil daily through air inlet before use.
2. Filler plug is used for lubricants filling from filler pump.
3. There are three ways of grease loading, cartridge loading, suction filling and loading with filler pump.
4. Trigger should be pressed thoroughly during operation.
5. Recommended working pressure: 90 PSI (6.2 Bar)

If your gun fails to work, it is due to air pockets in the gun. To remove the air, unscrew the gun head 1 to 1-1/2 turns and act as follows:

- Step 1 :Draw back plunger rod fully and release quickly, repeat several times. Push plunger rod all the way in. Tighten the head to the barrel.
Step 2 :Press air vent valve several times to release the air.

Now your gun is ready to use.

Do not use MULTI-LOADING alternately, please decide to use a long-period and proper loading way initially (depends on the variety of grease that your local supplier applied) and use it incessantly without change.



Fig. 1: Cartridge Loading Suction

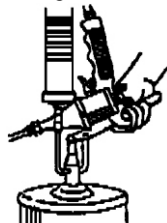


Fig. 2: Loading with Filler Pump



Fig. 3: Loading with Bulk Filling